



1. On-ly an act of kindness That you, lit-tle child, may show, While seek-ing to please the  
 2. On-ly a glimpse of sunshine That you, lit-tle child, may shed, To bright-en a path of  
 3. On-ly a word for Je - sus That you, lit-tle child, may speak; A word that will reach some  
 4. On-ly a lit - tle ser-vice While seeking to live for God Mid darkness, and sin, and



Sav - iour, And more like Him-self to grow. On - ly a fee - ble ef - fort  
 sor - row Where oth - ers may fear to tread. On - ly some self - de - ni - al,  
 sin - ner Whom Je - sus once came to seek. On - ly a lit - tle pa - tience  
 sor - row, Where Je - sus, Him-self, once trod. On - ly a lit - tle wait - ing,



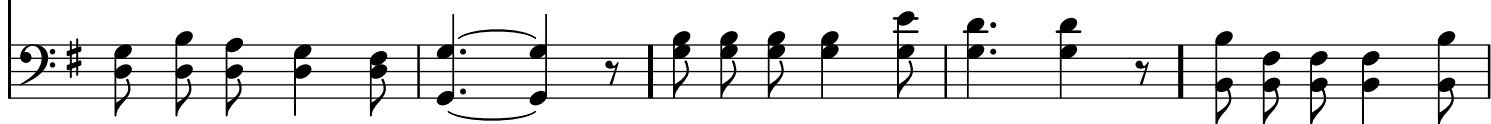
To light - en the heav - y load Of some wear-y, way - worn trav - 'ler, While  
 At - tend - ed, per-haps, with pain, But all that is loss at pres - ent Will  
 When some-bod - y does you wrong, For Je - sus will judge of - fen - ses, Dear  
 Dear child, let your light shine bright, For Je - sus will come and take you To



## REFRAIN



wending his toil - some road. On-ly a word for Je - sus, On-ly a whis-pered  
 someday be rich - est gain.  
 child, it will not be long.  
 glo - ry, and love, and light.



prayer, Seeking His help and blessing, Is heard by our Lord up there.

The image shows a musical score for a hymn. It consists of two staves: a treble clef staff on top and a bass clef staff on the bottom. Both staves are in the key of D major, indicated by a sharp sign on the F line. The treble staff contains a melody with lyrics underneath. The lyrics are: "prayer, Seeking His help and blessing, Is heard by our Lord up there." The bass staff provides a harmonic accompaniment with chords and single notes. The music ends with a double bar line.