

# Oh, Have You Not Heard of That Wonderful Love?

(P. M.)

J. C. Englebrecht



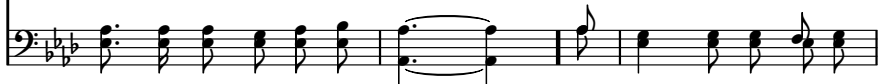
1. Oh, have you not heard of that wonder-ful love, That flows from God's heart so
2. Poor sin-ners un - done, and sin-ful, and lost, This love of our God now re -
3. Oh, sweet is its rest to the wear-y and worn, Who deep feel the bur-den of
4. Then will you not prove this wonder-ful love, That flows from God's heart so



free, Which led Him to give for a per - ish - ing world His  
 ceive; No heart is too sad this love to make glad, When  
 sin; It seeks for no mer - it its bliss to in - her - it, No  
 free, Which led Him to give, that sin - ners might live, His



Son to be nailed to the tree?  
 once on God's Word we be - lieve. Be - lieve that won - der - ful  
 good - ness with - out or with - in.  
 Son to be nailed to the tree?



love, Be - lieve that wonder-ful love, The gos - pel is free,



# Oh, Have You Not Heard of That Wonderful Love?

God sends it to thee, Be - lieve God's won - der - ful love.

The image shows a musical score for the hymn "Oh, Have You Not Heard of That Wonderful Love?". It consists of two staves: a treble clef staff for the melody and a bass clef staff for the accompaniment. The key signature is three flats (B-flat, E-flat, A-flat), and the time signature is common time (C). The melody is written in a simple, hymn-like style with a final double bar line. The lyrics are placed below the treble staff, aligned with the notes. The accompaniment consists of chords and single notes in the bass line, also ending with a double bar line.